

# **Neuropsych Testing**

**What it is & What it does**

**Presented by: Mary Ann Kezmarsky, Ph.D.**

## **Question:**

**So...You think you have a TBI on your hands, mild or otherwise.  
What should you do next?**

**Answer: Neuropsych Evaluation**

**What exactly is that?**

**It is not this!**



**It is:**

**Objective, standardized testing,  
normed to age, sex and  
education, which produces data  
(numbers) and a summary of  
conclusions**

# What Are These Tests?

## COGNITIVE TESTING:

- **WAIS IV:** Wechsler Adult Intelligence Scale IV (WAIS-IV) : IQ Test
- **WMS IV:** Wechsler Memory Scale IV (WMS-IV): Memory testing, visual and verbal
- **CVLT-2:** California Verbal Learning Test II (CVLT-II): Verbal learning Test, List Learning
- **Rey Complex Figure:** Visual Perception and Visual Memory Testing
- **Trail A:** Visual Motor Tracking
- **Trail B:** Visual Motor Double Tracking and Simultaneous processing, executive functioning
- **Oral Word Association (FAS):** Word Retrieval, Executive Functioning
- **WCST:** Wisconsin Card Sorting Test, Executive Functioning

## EMOTIONAL FUNCTIONING TESTING:

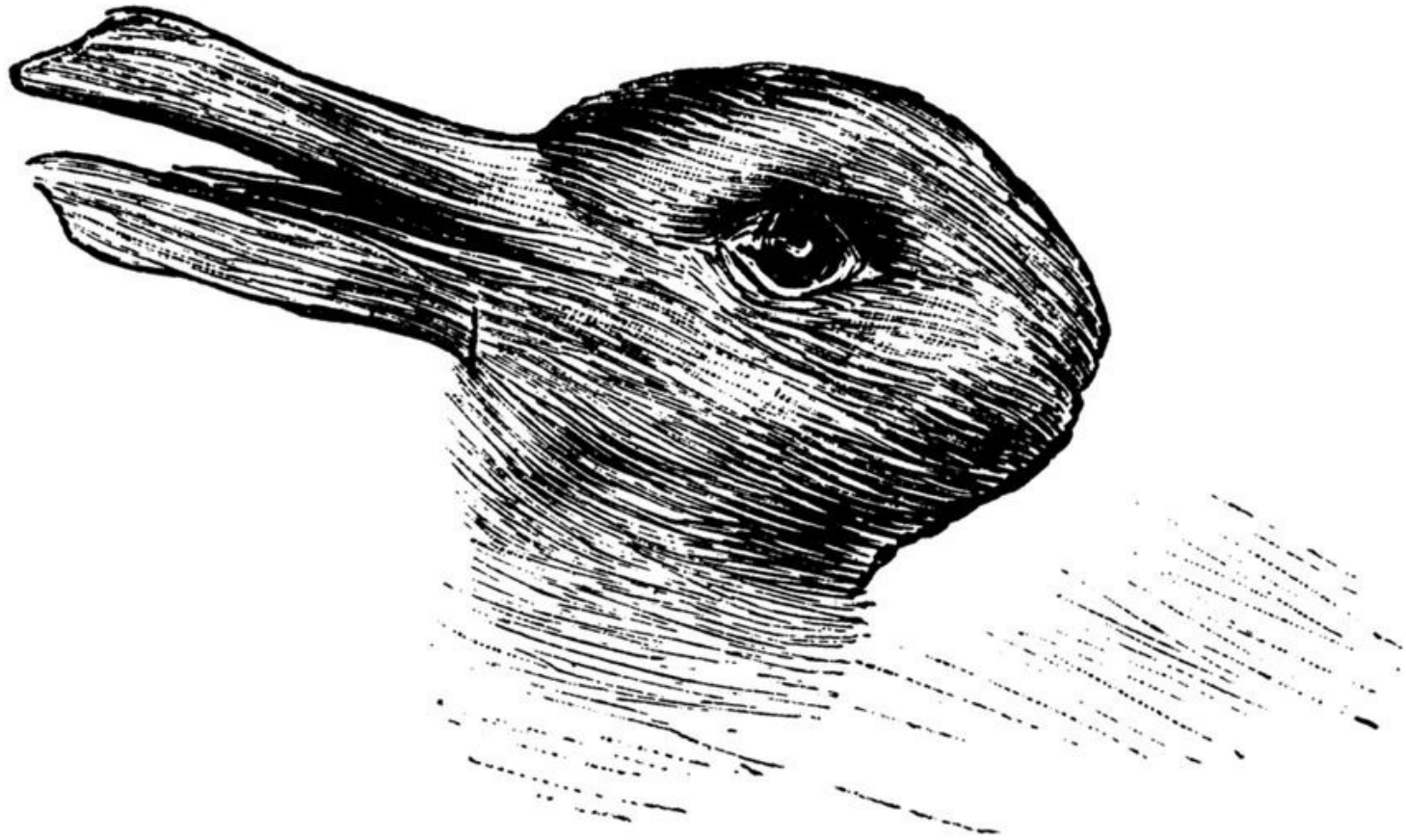
- **BDI:** Beck Depressive Inventory
- **BAI:** Beck Anxiety Inventory
- **PTSD ss:** Post Traumatic Stress Disorder Symptom Scale

## VALIDITY TESTING:

- **Rey 15**
- **TOMM 1, 2:** Tests of Memory and Malingering I, II (TOMM-I,II)
- **MMPI:** Minnesota Multiphasic Personality Inventory (MMPI)

# The Data Measures Cognitive Function

- **IQ**
- **Attention**
- **Concentration**
- **Language**
- **Visual and Verbal Memory**
- **Executive Functioning**
- **Processing Speed**
- **Visual Perception**





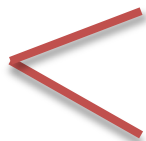
# What Will You Get For Your Money?

- **Records Review**
- **Background History**
- **Clinical Interview**
- **Behavioral Observations**
- **Validity Testing**
- **Cognitive Testing**
- **Emotional Functioning Testing**
- **Diagnosis – Work Injury Related or Not**
- **Recommendations – Cognitive Rehab, Psychotherapy, Biofeedback**

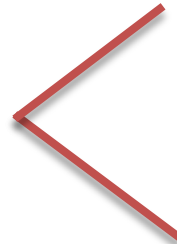
# If Multiply Concussed

- **Prior injuries predispose claimant to a more serious reaction to subsequent injuries**
- **Each successive injury produces the potential for a geometrically greater loss of functioning in the future**
- **It creates an even more dysfunctional cognitive picture than the 1<sup>st</sup> injury**

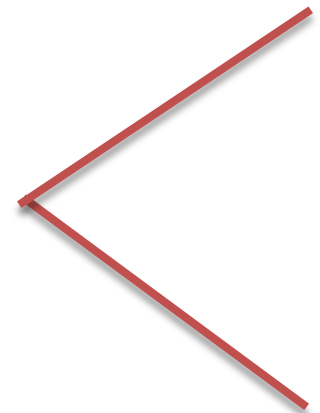
1995



2010



2016



# Premorbid Ability

**We need to discriminate between the pre-injury cognitive ability and post-injury cognitive ability.**

**We do this through examining areas such as:**

- **Vocation**
- **Education**
- **“Hold” Tests**
- **Test of Premorbid Functioning**

# Validity Testing

- **The Rey 15**
- **TOMM 1 and 2**
- **MMPI - 2**

# The Rey 15

**A**

**B**

**C**

**1**

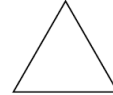
**2**

**3**

**a**

**b**

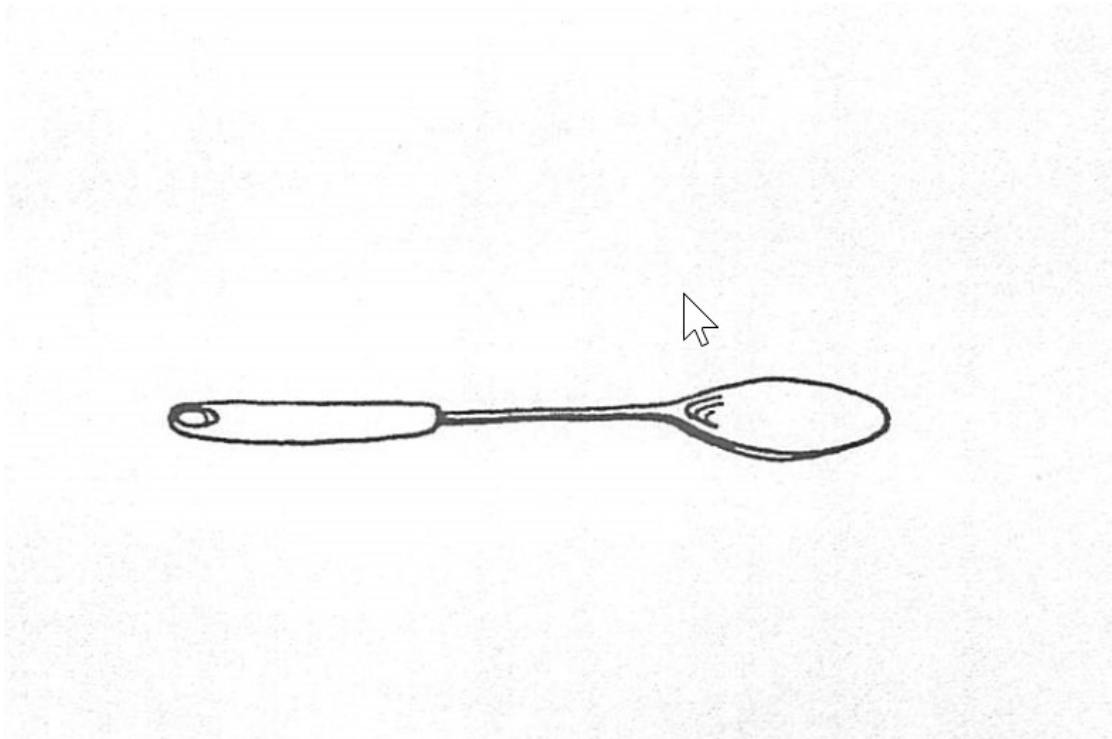
**c**

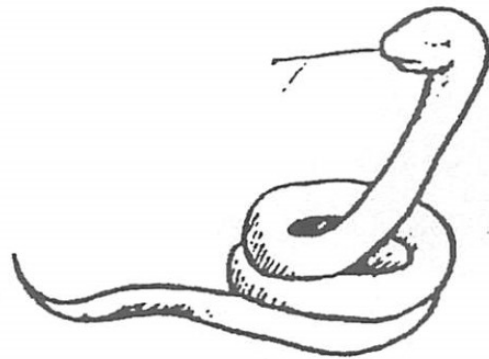


**I**

**II**

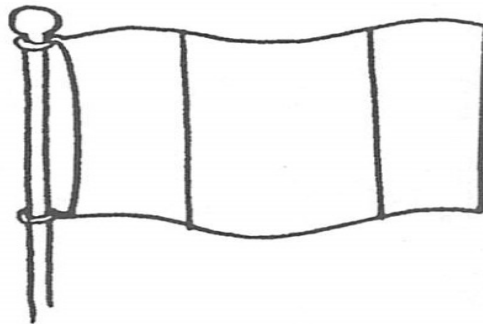
**III**







**A**

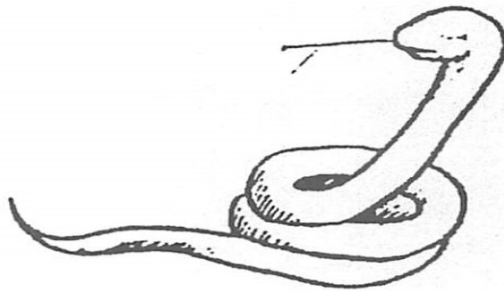


**B**





**A**



**B**

# When to Refer

- **Claimant's complaints:**
  - **Can't remember anything**
  - **Can't focus**
  - **Life's in "slo-mo"**
  - **Very emotional**
- **These are common in the first couple of months**
- **If they persist after 6 to 8 weeks a Neuropsych Screen is indicated**

**Thank you for your attention!**

**Mary Ann Kezmarsky, Ph.D.**  
**President & Chief Clinical Officer**  
**Workers Compensation Psychological Network**  
a PAX Health Company

**[mkezmarsky@wcpn.net](mailto:mkezmarsky@wcpn.net)**

**201-444-4415**